

E.F. Goodall Prairie School House
506 North Second Ave
St. Charles, IL
Owners: Jan & Laura Boldt
(630) 587-5682



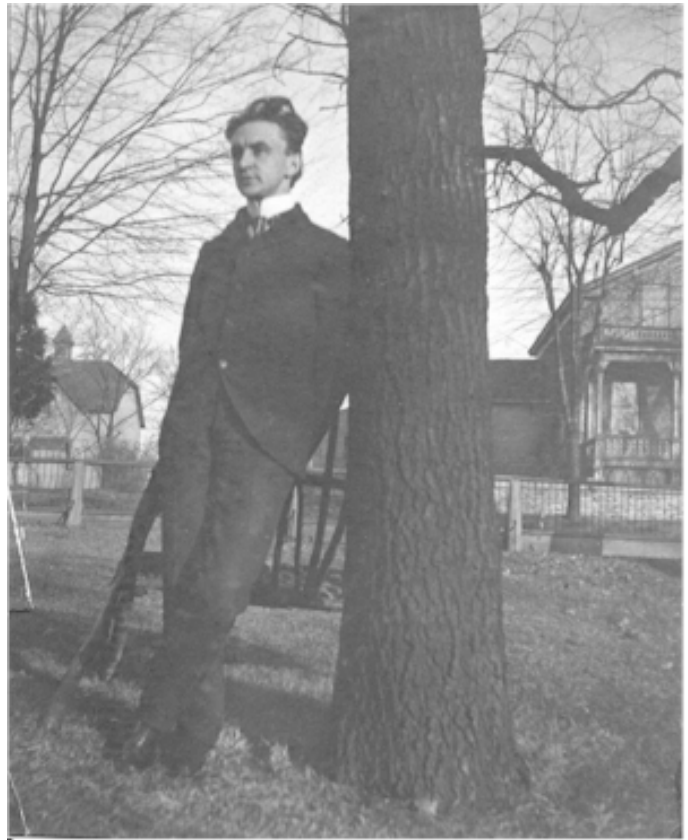
Our prairie-style home exemplifies the architectural design made popular by Frank Lloyd Wright during the early 1900's. Our 1916 home features overhanging eaves, long horizontal lines, rows of small windows, and a brick and stucco exterior. Consistent with many Frank Lloyd Wright homes, the interior of our home features large rooms, wide oak trim around windows and doorways, and a very distinctive staircase and railing.



The original owner of our home was Ernest F. Goodell, the son of Joel Goodell. Joel and his wife, Orrinda, came to St. Charles in January of 1857. As a resident of St. Charles, Joel held many offices of trust, including a member of the school board, the assessor for the town of St. Charles for twenty years, a deputy in the office of Kane County for sixteen years, and a tax collector for four years.

Joel was a home-loving man, who made strong friendships and was well known in Kane County. Two years before his death in 1916, Joel Goodell was retired, but active and interested in all things pertaining to his town, country and nation.

The only child of Joel and Orrinda, Ernest F. Goodell was born in St. Charles on August 31, 1858. He would marry Abby Peterson on October 22, 1884 and the couple would have three children: Ralph, Harry and Charlotte. Joel Goodell resided with Ernest after the death of wife in 1901 and was part of his son's family. E.F. Goodell would build a new home for the family at the corner of Second Avenue and Park (then 653 East Second Street, today 506 North Second Avenue) in St. Charles.



E.F. Goodell

The Goodell's started to move into their prairie-style home in April of 1916, but Joel would pass away a month later on May 23, 1916. As customary of the time, the funeral services for Joel Goodell were held at the home and burial was at North Cemetery in St. Charles, Illinois.

The E.F. Goodell home was pictured in the 1928 publication, "St. Charles, IL: The Beauty Spot of the Fox River Valley." The pamphlet was published by the Chronicle to help promote the City of St. Charles.

In October of 1972 the Illinois Historic Structures Survey considered the property to be of special interest and included it in their published "Inventory of Historic Structures in Kane County."

On November 1st of 2006, the St. Charles Historical Preservation Committee unanimously approved the application for landmark status and the property was designated a Historical Landmark for the City of St Charles by the City Council on November 13, 2006.

"PROVE ALL THINGS HOLD FAST THAT WHICH IS GOOD."

ST. CHARLES, KANE COUNTY, ILLINOIS, THURSDAY, OCTOBER 22, 1914

TIMELY TOPICS FOR HOME FOLKS

The local postoffice is now gathering mail from different street boxes, Monday evening. Any mail placed in boxes before 5 o'clock p. m. will be gathered up and sent out Sunday evening. This will be a great convenience to the public.

All telephone and light poles on Main street, from hill to hill, will be taken out. The wires will not be rounded, as that is not considered practical for a town of this size, but the wires will run south of Main on Illinois, crossing on Cedar to Seventh. His edict from the city will be a real improvement of Main street.

It may not be known that a nice revenue comes to the city light plant from beyond the city limits. The largest user of electricity outside the city limits is the gravel pit, which runs several motors by city power. Other users are the Faultless Iron Works, J. P. Crane, J. E. Callender, and J. Soper.

In the near future more will take advantage of the plant for lighting purposes than those who are now patrons.

MARRIED

The marriage of Miss Mary Ball and Joseph Flynn was solemnized last Thursday evening at the newly furnished home of the bridal couple in the presence of relatives and a few personal friends. The couple were unattended, and the affair was entirely devoid of formalities. The guests were met at the door by the bride and groom, and promptly at eight o'clock they stood before Rev. Father Arse, pastor of St. Patrick's church, and took the marriage vows.

The bride was beautifully gowned in tulle and trimmed in chantilly. She carried a shower bouquet of bride's roses.

The house decorations were yellow and white. After the ceremony, followed by congratulations, the couple slipped away and were gone,

E. F. GOODSELL FOR COUNTY TREASURER

E. F. Goodsell of St. Charles is the Republican nominee for county treasurer, and he deserves to be elected. He is thoroughly qualified



for the office, and his standing in Kane county is such that the tax-payers will have implicit confidence in him. For a number of years he has served on the board of supervisors, and has thus been in close touch with the conduct of the treasurer's office.

He became a candidate at the earnest solicitation of some of the leading business men of the county, who knew how well qualified he was for the place.

As to Mr. Goodsell's qualification for the office, there can be no question. Training, experience and work all fit him for the position. Kane County has furnished some very able and trust-worthy men in the County treasurer's office in years past, and Mr. Goodsell, if elected to the position, will more than keep up the standard of quality.

REPUBLICANS RALLY

Evangelistic Meetings at M. E. Church

Kentucky Giant Preaches Stirring Sermons

Singing by the Reddens and the Chorus Choir Captivating

The four weeks' evangelistic service under the leadership of R. Sam Kirkland, the great Kentucky preacher, and Prof. and Mrs. Redden, the Bostonian singers, commenced last Sunday morning with the usual attendance. In the evening the church was comfortably filled and a chorus of nearly thirty voices led the



EVANGELIST KIRKLAND.

singing under the leadership of Prof. Redden. It was a memorable service. The Evangelist preached a very stirring and helpful sermon to an enthusiastic audience and the singing was indeed rousing. From the first day it was a splendid success and is indicative of the success of the meetings.

A men's prayer meeting was started Tuesday noon, 12:15 to 12:45 in the little building east of Norris Bros. Furniture store, where every day except Sunday at that hour Mr. Kirkland will lead the meeting and Prof. Redden will sing. All men are invited to drop



B

WE
The
E.
104-10
Re-wit



SUBSTANTIAL, COMFORTABLE HOMES
Together with Wholesome Living Conditions



C. L. Hunt



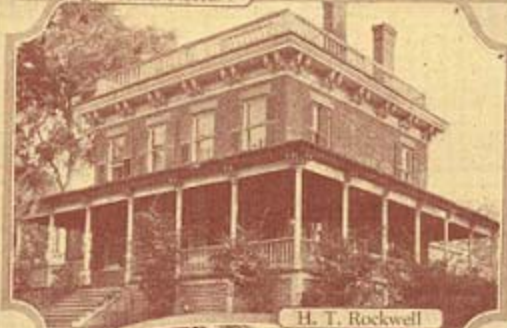
H. C. Hanson



Lester Norris



W. P. Lillibridge



H. T. Rockwell



H. C. Harbaugh



Herman Rothstein



Arund Nelson



C. P. Dahl



E. F. Goodell



“St. Charles, IL: The Beauty Spot of the Fox River Valley”

Sources

1870 U.S. Federal Census.

1880 U.S. Federal Census.

1900 U.S. Federal Census.

1910 U.S. Federal Census.

1920 U.S. Federal Census.

1930 U.S. Federal Census.

"The Biographical Record of Kane County Illinois," Chicago: The S.J. Clarke Publishing Company, 1898.

California Death Index, 1940-1997 Record, Ancestry.com, 2000

Durant, Pliny A., "Passing in Review: Remembrances of Men Who Have Lived in St. Charles," Retyped by the St. Charles Heritage Center, 2005.

"Editorial, E.F. Goodell," St. Charles Chronicle (microfilm), August 27, 1914.

"E.F. Goodell for County Treasurer," St. Charles Chronicle (microfilm), October 22, 1914.

"E.F. Goodell, Republican Candidate for County Treasurer," St. Charles Chronicle (microfilm), September 3, 1914.

Evans Tri-City Directory 1910-1911, Elgin, IL.

Evans Tri-City Directory 1917-1918, Elgin, IL.

Evans Tri-City Directory 1920-1921, Elgin, IL.

Evans Tri-City Directory 1924-1925, Elgin IL.

Evans Tri-City Directory 1928-1929, Elgin, IL.

"Goodells Start Back Wed. for California," St. Charles Chronicle (microfilm), September 21, 1922.

"Inventory of Historic Structures in Kane County, IL" October 1972.

"Joel Goodell, Aged Citizen, Succumbs," St. Charles Chronicle (microfilm), May 25, 1916.

"Local News and Personals," St. Charles Chronicle (microfilm), April 20, 1916.

Obituary, Mrs. Joel Goodell, St. Charles Chronicle (microfilm), August 16, 1901.

Pearson, Ruth Seen, "Reflections of St. Charles."

Sanborn Fire Insurance Maps, St. Charles April 1923.

Sanborn Fire Insurance Maps, St. Charles July 1928.

"St. Charles Biographical Directory and Census Report 1885," Chicago: J.F. Wilcox Publisher.

"St. Charles, IL: The Beauty Spot of the Fox River Valley," Chronicle Publishing, St. Charles, IL, 1928.